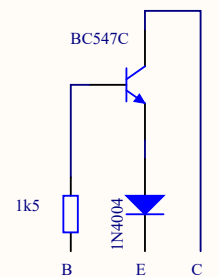


The power on time delay didn't work because the voltage at node POM had only to be 300-400mV less negative for the relay drives VT2 & VT3 to turn on.

The circuit below fixes the problem and if the original transistors are removed and the diode and resistor are soldered to the leads of a new BC547C and cut to length this can replace the original transistor and PCB modification is needed.



The reed relays originally used in the muting circuits are no longer available. Further, as low cost reed relays are now usually available as SPST-NO, the circuit board has been redesigned to use SPST reed relays with transistor drivers to make some of the contacts SPST-NC when system power is applied. A power on mute function has been added.

AWA manufactured the BAC-1. This schematic is based upon circuits in BAC-1 Consolelette Type 2G61226, S/N 71. PCB DWG # 61226z-ONA



Title **AWA BAC-1 STUDIO/BOOTH MUTE**

Size: A4 Number: SS250216 Revision:

Date: 7/04/2018 Time: 12:40:37 PM Sheet 1 of 1

File: C:\Users\peter\Documents\Projects\AWA BAC-1 Restoration\AWA 2G61226 SN 71\Schematics\AWA MUTE.SchDoc

O'Neill Associates
13 Belvidere Road
Saddleworth
S4 5413
Australia

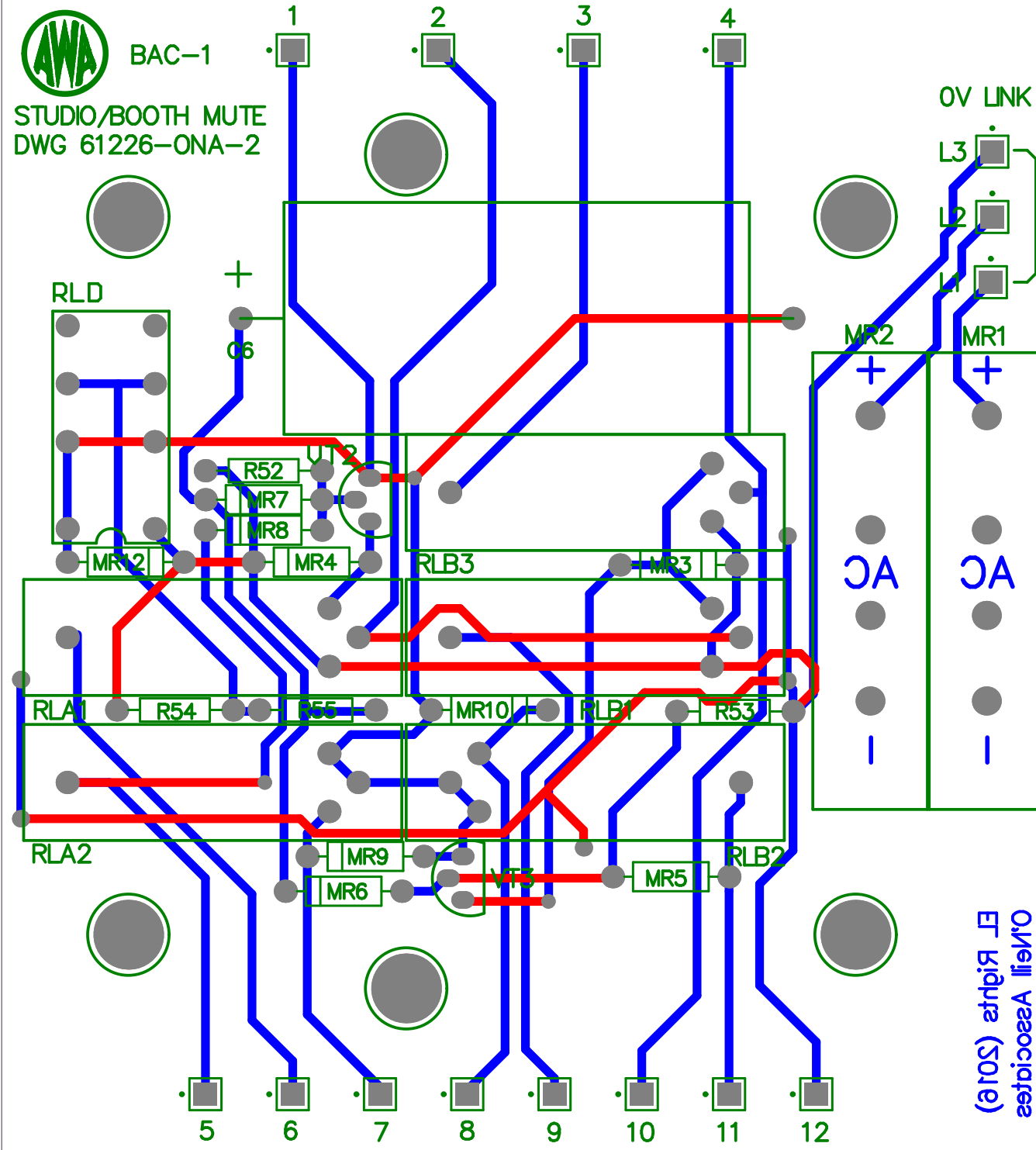


PCB
AWALOGO
AWA_MUTE



BAC-1

STUDIO/BOOTH MUTE
DWG 61226-ONA-2



O'Neill Associates
ET Rigue (Sole)

Designator	Manufacturer	ManufacturerPartNumber	Quantity	Supplier	SupplierPartNumber	Value
1, 2, 3, 4, 5, 6, 7, 8, 9, 10, 11, 12	ETTINGER	13.14.305	12	Element 14	1336236	
C6	Kemet	PEG124ML410VQL1	1	RS Components	226-7019	1000uF
L1, L2, L3			3			
MR1, MR2	Siemens	B80C2200	2			
MR3, MR4, MR5, MR6, MR7, MR8, MR9, MR10, MR12	Vishay	1N4004-E3/54	9	RS Components	628-9029	
PART1, R52, R53	TE Connectivity, Vishay, Vishay	LR1F1K5, MRS16000C4703FCT00, MRS16000C4703FCT00	3	RS Components	148-540, 683-2850, 683-2850	1k5, 470k, 470k
PART2, VT2, VT3	ON Semi	BC547CZL1G	3	RS Components	464-019	
PART3	Vishay	1N4004-E3/54	1	RS Components	628-9029	
PCB	PCBCART	61226-ONA	1	PCBCart	160302-121809-967	
R54	Vishay	VR25000002204JA100	1	RS Components	484-4501	2M2
R55	Vishay	MRS16000C1000FCT00	1	RS Components	683-2705	100R
RLA1, RLA2, RLB1, RLB2, RLB3	RS Pro	B24-1A72-BV732	5	RS Components	291-9732	
RLD	AXICOM	V23105A5005A201	1	RS Componen	1966298	